

OR-M 550 / 555

High performance machines for plastic strapping



Customer benefits

Characteristics

Up to 70 cycles per minute

Touch Panel

Simple technology, few moving parts

Constant strap tension

Ergonomically positioned dispenser

Customer benefits

· Fast strapping

· Strap tension easily adjustable
· Flush operator controls
· No exposed operator functions

· Reliable, also in continuous operation
· Easily accessible (without tools)

· For small to large packages
· For soft and hard products

· Simple and rapid coil change

Highlights



Lightweight strap for cost effective strapping

Use of thin PP strap or 5 mm PP strap with OR-M 550 as alternative to 9/12 mm strap

Exceptionally easy operation

Strap tension adjustable with press button



Minimum maintenance requirement

without tools



Simple coil change



Easy fault clearance

without tools



Robust, compact design

Fully automatic machines with integrated conveyor, for new or existing production and packaging lines

Standard equipment

- Adjustable conveyor height
- Swinging out belt conveyor system
- Four transport rollers, with two braked
- Closed strap arch system
- Heat seal
- Automatic strap threading device
- Automatic strap end ejection
- Automatic strap loop ejection for cycles without product
- Cycle counter
- Electronic control system with microprocessor + Siemens S7-200 SPS
 - Free memory capacity for peripheral modules
 - Control elements linkable with external control cabinet (by Bus)
- Emergency push button
- Dispenser, side-mounted on machine frame
- Electrical supply cable, 5 m
- **Operation / Indication**
 - Touch Panel, mounted on dispenser side
 - Graphic display for program selection and strap interspace
 - Error message display
- **Interface**
 - One 24 pole harding connector
 - All output (transmitting) signals potential free
 - Ready signal to feed conveyor
 - General fault signal
 - Input signal, potential free
 - Ready signal from follow-on conveyor
- **Basic photocell** for collecting and positioning the packages

Strapping programs

Standard strapping modes



Pass through without strapping



Single strap



Two straps



Three straps



Multiple strapping of long packages with regular strap distances

Technical data

Machines

- Heat weld sealing, preheating time 30 s
- Electrical supply 230 V, 50 Hz, 6,3 AT, 1 NPE
- Power current fuse 10 AT
- Conveyor height 720–950 mm
- Conveyor speed, fully adjustable 5–45 m/min
- Machine weight 240 kg
- Colour Yellow: RAL 1007

Packages

- Min. width 100 mm
- Max. width/height Arch dimension / . 50 mm
- Min. length 150 mm
- Max. weight 35 kg

Plastic strap (PP)

- | | |
|------------------------------|-------------|
| Width 5 mm | 372.605.585 |
| 9 mm | 371.609.555 |
| 12 mm | 371.612.540 |
| Strap coil, inside/outside Ø | 200/430 mm |

Further Technical Data

On page 3

Polypropylen straps and applications have to correspond with the strap specifications recommended by ORGAPACK!

Performance

Machines

- For strap width
- Arch dimension (width x height)

OR-M 550 5 mm

650 x 500 mm
850 x 650 mm

OR-M 555 9/12 mm

650 x 500 mm
850 x 650 mm
850 x 850 mm

- Strap tension, up to
- Cycles per minute, up to
- Room temperature
- Relative humidity of air

300 N
70*
10–40°C
10–65%

450 N
65*
10–40°C
10–65%

Performance:

Depends on arch and package dimensions, conveyor speed, package distances and strap tension

* Without conveying

Standard version

Options

CT Version (Cold and Tropic Environment) OR-M 550 / 555

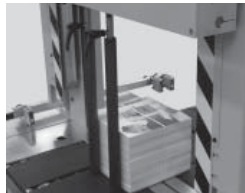
Room temperature:

5–40°C

Relative humidity of air:

10–85%

- Rust-free feet and guide rolls
- Rust-free conveyor table
- Basic frame with special colour treatment



Bundle stops

Pneumatically driven front stops, for precise positioning of loose packages.



Fixable feet

With adjusted feet the machine can be supported and fixed on the floor



Strapping in the centre

The packages are – independent of its length – automatically strapped in the centre.



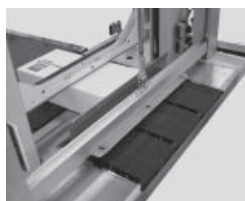
Transport stop

When there are no packages on the infeed side of the machine, the conveyor stops automatically until a new package is on the conveyor.



Conveyor height

950–1200 mm



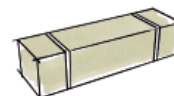
Package stops

Strap position adjustable from front edge of package: package infeed from 85–125 mm.



Package height

If strapping height exceeds or remains under the adjusted value, strapping is prevented.

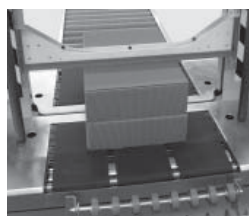


First strapping position

For parallel strapping. High operating convenience due to direct access to strapping position by shifting the photocells.

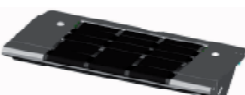
Triple signal lamp: red, green, orange

Different machine status are optically displayed and every machine fault is indicated by the signal lamp.



Hold down device

Pneumatic hold down device, pressing force up to 250 N, for containing lightweight packages during strapping cycle. Can be mounted at infeed and/or outfeed side of the machine. Compressed air consumption (6 bar): approx. 300 l/min.



Conveyor extension

The belt conveyor system can be extended on the infeed and outfeed side, by 120 mm on each side.

Second strapping tension

If the package height exceeds the adjusted photocell a stronger pre-adjusted tension will be applied.

Potential free signals in 24 pin Interface plug

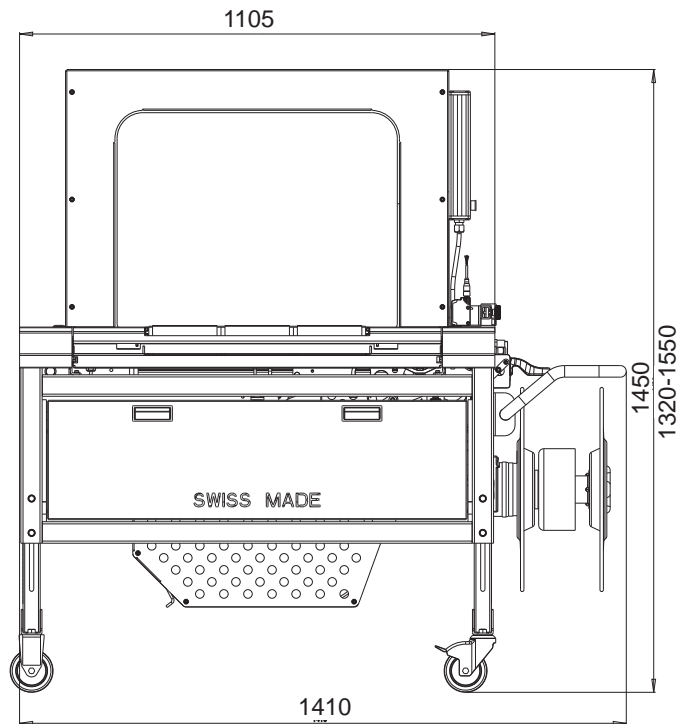
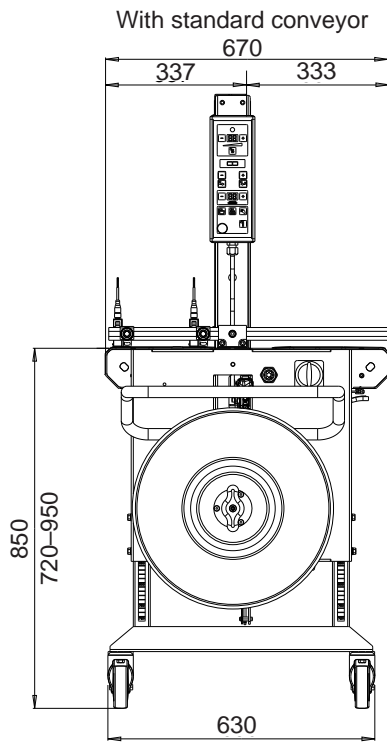
- Strap end
- Strap end pre-warning
- Automatic Mode
- Conveyor signal for infeed and down stream conveyor
- Cycle counter



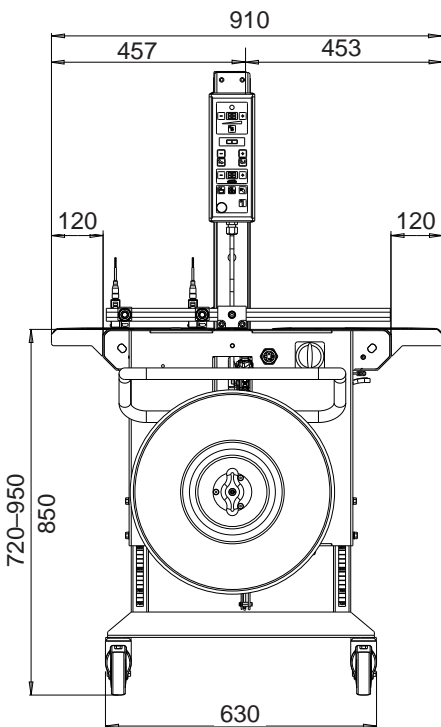
Strap end pre-warning with signal lamp (white)

When the coil diameter falls below a pre-adjusted value, the white indicator lamp will be activated. This enables a coil to be prepared in advance to minimise production down time.

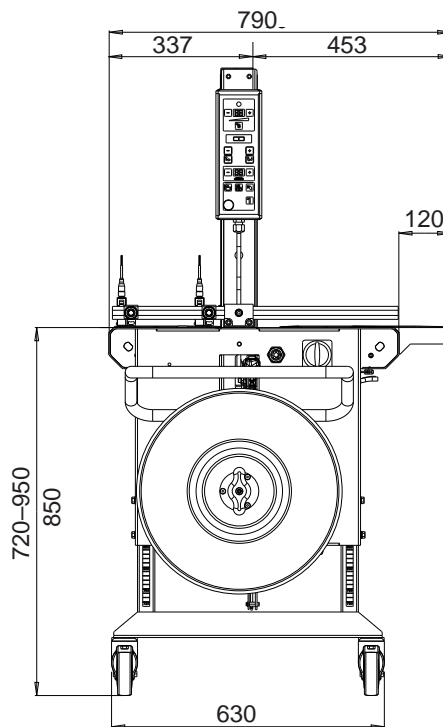
Layout
Arch dimension
650 x 500 mm



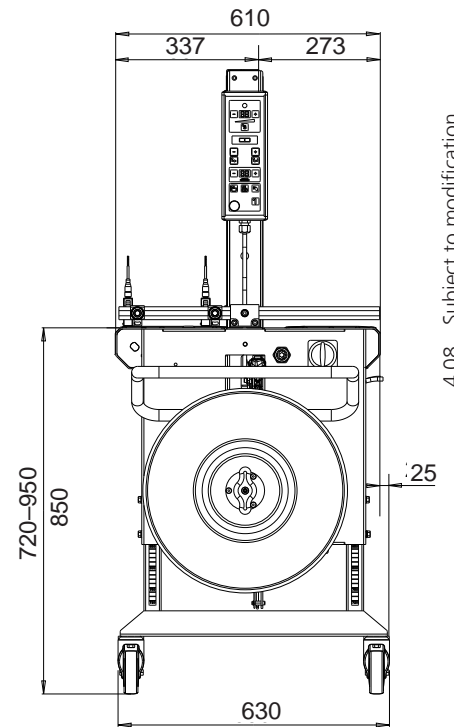
With conveyor extension,
infeed and outfeed side



With conveyor extension,
infeed or outfeed side



Short version



4.08 Subject to modification

ORGAPACK GmbH
Packaging Technology

Silberstrasse 14
CH-8953 Dietikon
Phone +41 44 745 50 50
Fax +41 44 745 52 16
pt@orgapack.com
www.orgapack.com

Zertifikat ISO 9001 / EN 29001